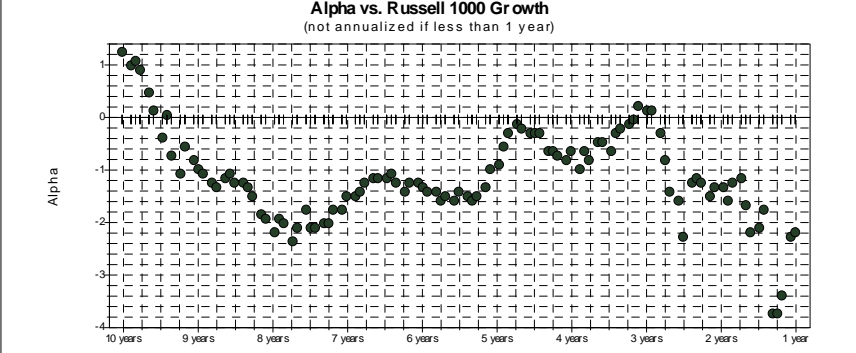
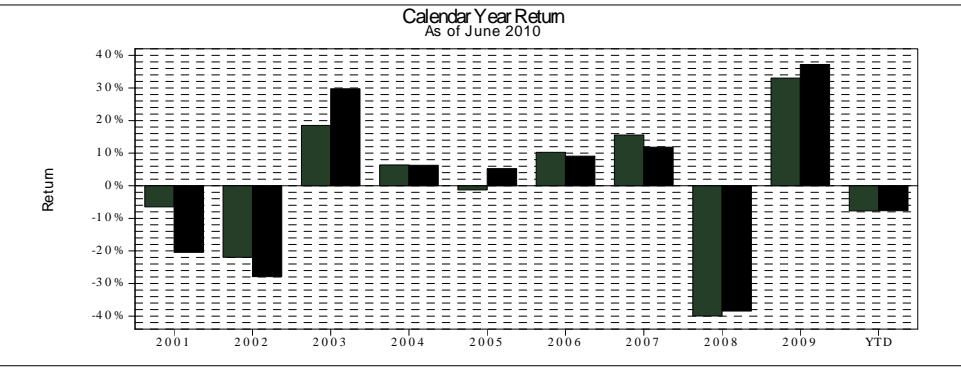
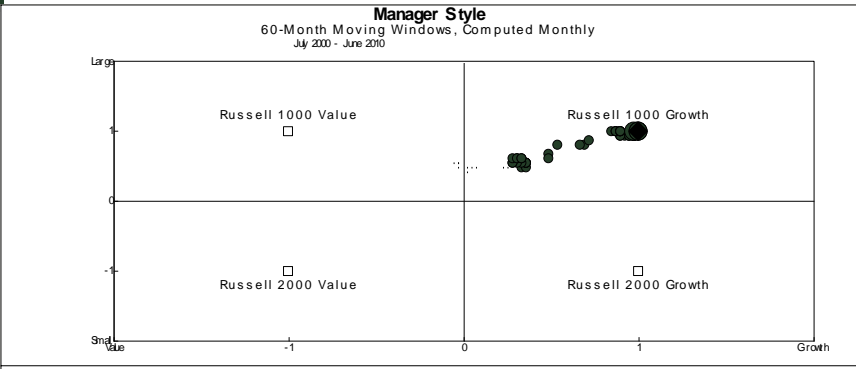


# Large Cap Growth Stock Fund

EQUITY ANALYTICS



**Portfolio Statistics**  
July 2000 - June 2010: Summary Statistics

	Return	Standard Deviation	# of Up Periods	Up Capture % vs. Market	# of Down Periods	Down Capture % vs. Market	Tracking Error vs. Market	Beta vs. Market	Info Ratio vs. Market	Sharpe Ratio	Alpha vs. Market	Beta vs. Market	R Squared vs. Market
Ridgeworth Large Cap Growth Stock I	-1.99%	15.43%	66	81.61%	54	80.56%	7.28%	48.33%	0.43	-0.29	1.84%	0.76	86.41%
Russel 1000 Growth	-5.14%	18.88%	61	100.00%	59	100.00%	0.00%	0.00%	0.00	-0.41	0.00%	1.00	100.00%

As of 30 June 2010	1 year	5 years	10 years
<b>Ridgeworth Large Cap Growth Stock I</b>	<b>12.21%</b>	<b>-0.49%</b>	<b>-1.99%</b>
Russel 1000 Growth	13.62%	0.38%	-5.14%

The inception date for the Ridgeworth Large Cap Growth Stock Fund I Shares is 7/1/92. Fund and Benchmark returns are from the beginning of the month following the Fund's inception. Silvant Capital Management LLC is the sub-advisor of the Fund.

**Past performance is no guarantee of future results. The performance quoted represents past performance and current returns may be lower or higher. The investment return and net asset value will fluctuate so that an investor's shares, when redeemed, may be worth more or less than the original cost. To obtain Ridgeworth Funds performance information current to the most recent month end, please visit [www.ridgeworthfunds.com](http://www.ridgeworthfunds.com). An investor should consider the fund's objectives, risks, and charges and expenses carefully before investing or sending money. This and other important information can be found in the fund's prospectus, which can be obtained by calling 1-888-784-3863 or visiting [www.ridgeworthfunds.com](http://www.ridgeworthfunds.com). Please read the prospectus carefully before investing or sending money.** Ridgeworth Funds are distributed by Ridgeworth Distributors LLC. Ridgeworth Investments is the trade name for Ridgeworth Capital Management, Inc., the adviser to the Ridgeworth Funds, and is not affiliated with the distributor.

Created with Zephyr StyleADVISOR. Manager returns supplied by: Morningstar, Inc. StyleADVISOR provides returns-based analysis for the investment industry.

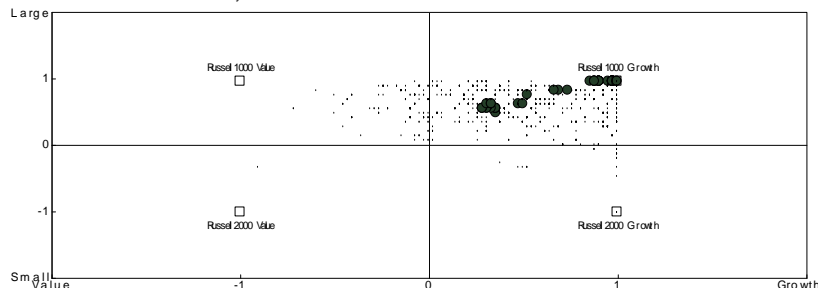
**For Institutional or Investment Professional Use Only**

Not FDIC Insured	No Bank Guarantee	May Lose Value
------------------	-------------------	----------------

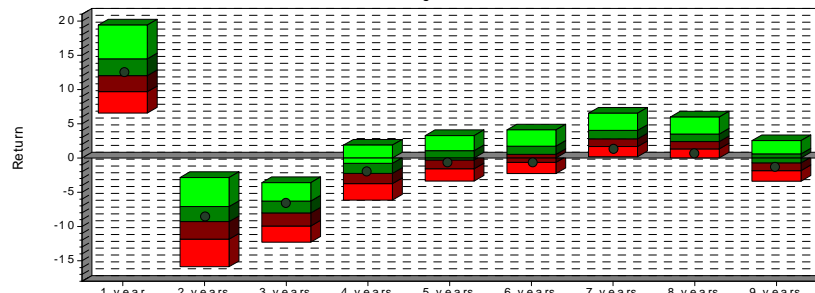
# Large Cap Growth Stock Fund

EQUITY ANALYTICS

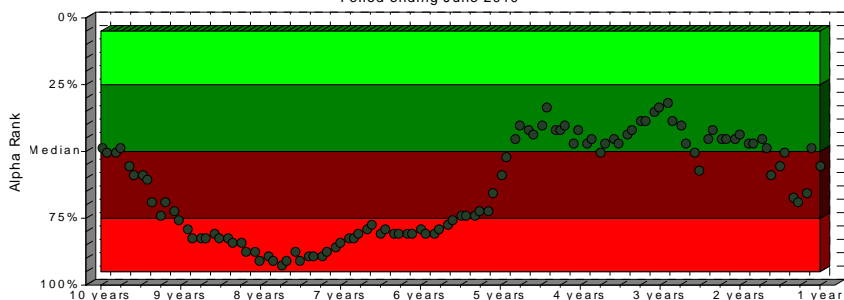
**Manager Style**  
60-Month Moving Windows, Computed Monthly  
July 2000 - June 2010



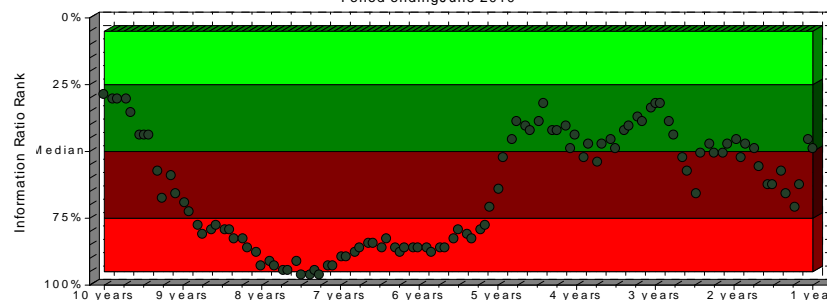
**Return vs. Peers**  
Period ending June 2010



**Alpha Rank**  
Period ending June 2010



**Information Ratio Rank**  
Period ending June 2010



As of 30 June 2010	1 year	5 years	10 years
	1837 mng	1604 mng	1227 mng
Median - Morningstar Large Growth	12.02%	-0.28%	-3.20%
<b>Ridgeworth Large Cap Growth Stock I</b>	<b>12.21%</b>	<b>-0.49%</b>	<b>-1.99%</b>

The inception date for the Ridgeworth Large Cap Growth Stock Fund I Shares is 7/1/92. Silvant Capital Management LLC is the sub-adviser of the Fund. The Morningstar Large Cap Growth Universe for the 1-, 5- and 10-year periods is 1837, 1604 and 1227 funds, respectively. The colored sections represent: 5th to 25th (light green), 26th to 50th, (dark green), 51st to 75th (dark red) and 76th to 95th (red) percentiles.

**Past performance is no guarantee of future results. The performance quoted represents past performance and current returns may be lower or higher. The investment return and net asset value will fluctuate so that an investor's shares, when redeemed, may be worth more or less than the original cost. To obtain Ridgeworth Funds performance information current to the most recent month end, please visit [www.ridgeworthfunds.com](http://www.ridgeworthfunds.com). An investor should consider the fund's objectives, risks, and charges and expenses carefully before investing or sending money. This and other important information can be found in the fund's prospectus, which can be obtained by calling 1-888-784-3863 or visiting [www.ridgeworthfunds.com](http://www.ridgeworthfunds.com). Please read the prospectus carefully before investing or sending money.** Ridgeworth Funds are distributed by Ridgeworth Distributors LLC. Ridgeworth Investments is the trade name for Ridgeworth Capital Management, Inc., the adviser to the Ridgeworth Funds, and is not affiliated with the distributor.

Created with Zephyr StyleADVISOR. Manager returns supplied by: Morningstar, Inc. StyleADVISOR provides returns-based analysis for the investment industry.

**For Institutional or Investment Professional Use Only**

Not FDIC Insured	No Bank Guarantee	May Lose Value
------------------	-------------------	----------------